



wahaso™

WATER HARVESTING SOLUTIONS

Packaged Condensate Harvesting Systems from Wahaso

Wahaso Model COND-UV20-250 and 500

SPECIFICATIONS & DATA SHEET

PACKAGED SYSTEMS

	COND-UV20-250	COND-UV20-500
System Configuration	Water holding, treatment, pressurization and controls located on one skid	Water holding, treatment, pressurization and controls located on one skid
Skid Dimensions	98"L X 31" W X 66"H	110"L X 31" W X 82"H
Minimum Recommended Room Size with Clearances	10'L x 5'W X 6'H	11'L x 5'W X 6'H
Skid Weight	Approximately 450 lbs	Approximately 550 lbs
Condensate Holding Capacity	Up to 220 US Gallons	Up to 480 US Gallons
Typical Gallons Per Day Processing Range	500-3,000 GPD	2,000 – 10,000 GPD
Treatment Gallons Per Minute	20 GPM	
Filtration Type	1-stage bag, 5 micron	
Sanitation	Viqua Pro20, 70 mJ/cm2*	
Pump Output	Up to 40 GPM (Pressure dependent)	
Pressure Range	65-120 PSI Pressure (adjustable)	
Pump H.P.	3.0 HP	
Electrical Requirements	220V, 1 Phase, 208/230/460 VAC 3 Phase	
Electrical Circuit	1-Phase 30 AMP, 3-Phase 20 AMP	
Plumbing Connections	1.5" inlet & outlet, PVC flange	

* Based on 70% UVT water clarity. Condensate UVT should be 90% or greater, allowing a significantly greater exposure and pathogen log reduction.

Included Standard:

- o All listed components come assembled, wired and plumbed on an HDPE skid with Schedule-80 PVC piping, tested at our facility.
- o Wahaso WCS-200 Controls in NEMA 12 box mounted to skid with PLC operational software.
- o Includes installation and operations manuals.
- o Wahaso technical support via phone for installation, start-up and operational questions.
- o Limited one-year warranty on entire system.

Wahaso.com

P.O. Box 279 | Hinsdale, IL 60522 | P 800.580.5350 | E info@wahaso.com

© 2019 Wahaso™ | Water Harvesting Solutions, Inc.

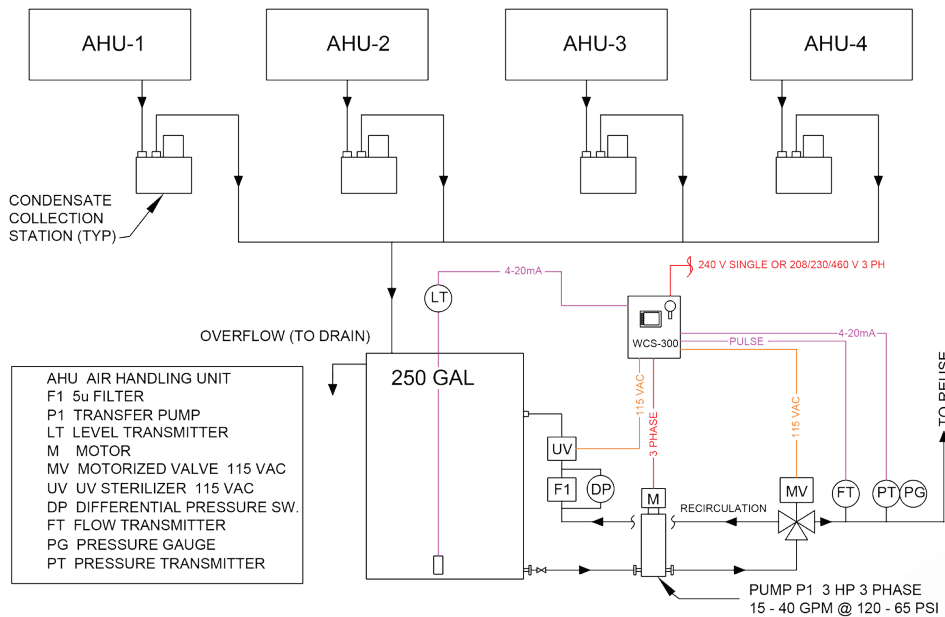


Packaged Condensate Harvesting Systems from Wahaso

Installation Notes:

System installation must adhere to all relevant local commercial plumbing and electrical codes. Permits may be required, and work should be performed by a licensed contractor.

- o Locate the COND-UV20-250 or 500-model in a utility area protected from freezing and temperatures greater than 100 degrees. Ensure sufficient clearance on sides and top of unit plumbing, wiring and access. (See Specifications section.)
- o Run piping from the collection pans from one or more blower units to the 2" inlet at the top of the COND-UV20 collection tank. PVC is acceptable in most municipalities. Check local codes. If it is not possible to gravity feed the condensate, add one of the optional Little Giant transfer stations available from Wahaso.
- o Run up to 2" piping from the pump outlet flange to reuse. Schedule 80 PVC or copper depending on local codes. For output up to 20 GPM, 1" or 1.5" is acceptable. For output to the maximum of 40 GPM, run 2" pipe.
- o Connect 240-Volt 1 phase power to Controls cabinet from local panel with dedicated 20-AMP or 30-AMP breaker. (See Specifications section).



Flow Schematic for Wahaso Model COND-UV20-250 unit. Note that remote collection units are optional and not included in standard pricing.

**Skid Diagram for Wahaso Model COND-UV20-250 unit.
Dimensions: 98" L X 31" W X 66" H**

